

## Wall Mounted Type

Model			FXAQ40MVE	FXAQ50MVE	FXAQ63MVE	
★1 Cooling Capacity (19.5°CWB)	kcal/h		4,000	5,000	6,300	
	Btu/h		15,900	19,900	25,000	
	kW		4.7	5.8	7.3	
★2 Cooling Capacity (19.0°CWB)	kW		4.5	5.6	7.1	
★3 Heating Capacity	kcal/h		4,300	5,400	6,900	
	Btu/h		17,000	21,500	27,300	
	kW		5.0	6.3	8.0	
Casing Color			White (B-272)	White (B-272)	White (B-272)	
Dimensions: (H×W×D)		mm	290×1,050×230	290×1,050×230	290×1,050×230	
Coil (Cross Fin Coil)	Rows×Stages×Fin Pitch	mm	2×14×1.4	2×14×1.4	2×14×1.4	
	Face Area	m <sup>2</sup>	0.213	0.213	0.213	
Fan	Model		QCL9686M	QCL9686M	QCL9686M	
	Type		Cross Flow Fan	Cross Flow Fan	Cross Flow Fan	
	Motor Output × Number of Units	W	43×1	43×1	43×1	
	Air Flow Rate (H/L)	m <sup>3</sup> /min		12/9	15/12	19/14
		cfm		424/318	530/424	671/494
Drive			Direct Drive	Direct Drive	Direct Drive	
Temperature Control			Microprocessor Thermostat for Cooling and Heating	Microprocessor Thermostat for Cooling and Heating	Microprocessor Thermostat for Cooling and Heating	
Sound Absorbing Thermal Insulation Material			Foamed Polystyrene / Foamed Polyethylene	Foamed Polystyrene / Foamed Polyethylene	Foamed Polystyrene / Foamed Polyethylene	
Air Filter			Resin Net (Washable)	Resin Net (Washable)	Resin Net (Washable)	
Piping Connections	Liquid Pipes	mm	φ6.4 (Flare Connection)	φ6.4 (Flare Connection)	φ9.5 (Flare Connection)	
	Gas Pipes	mm	φ12.7 (Flare Connection)	φ12.7 (Flare Connection)	φ15.9 (Flare Connection)	
	Drain Pipe	mm	VP13 (External Dia. 18 Internal Dia. 13)	VP13 (External Dia. 18 Internal Dia. 13)	VP13 (External Dia. 18 Internal Dia. 13)	
Machine Weight		kg	14	14	14	
★5 Sound Level (H/L)		dBA	39/34	42/36	46/39	
Safety Devices			Fuse	Fuse	Fuse	
Refrigerant Control			Electronic Expansion Valve	Electronic Expansion Valve	Electronic Expansion Valve	
Connectable outdoor unit			R410A M Series	R410A M Series	R410A M Series	
Standard Accessories			Operation Manual, Installation Manual, Installation Panel, Paper Pattern for Installation, Insulation Tape, Clamps, screws.	Operation Manual, Installation Manual, Installation Panel, Paper Pattern for Installation, Insulation Tape, Clamps, screws.	Operation Manual, Installation Manual, Installation Panel, Paper Pattern for Installation, Insulation Tape, Clamps, screws.	
Drawing No.			3D039370			

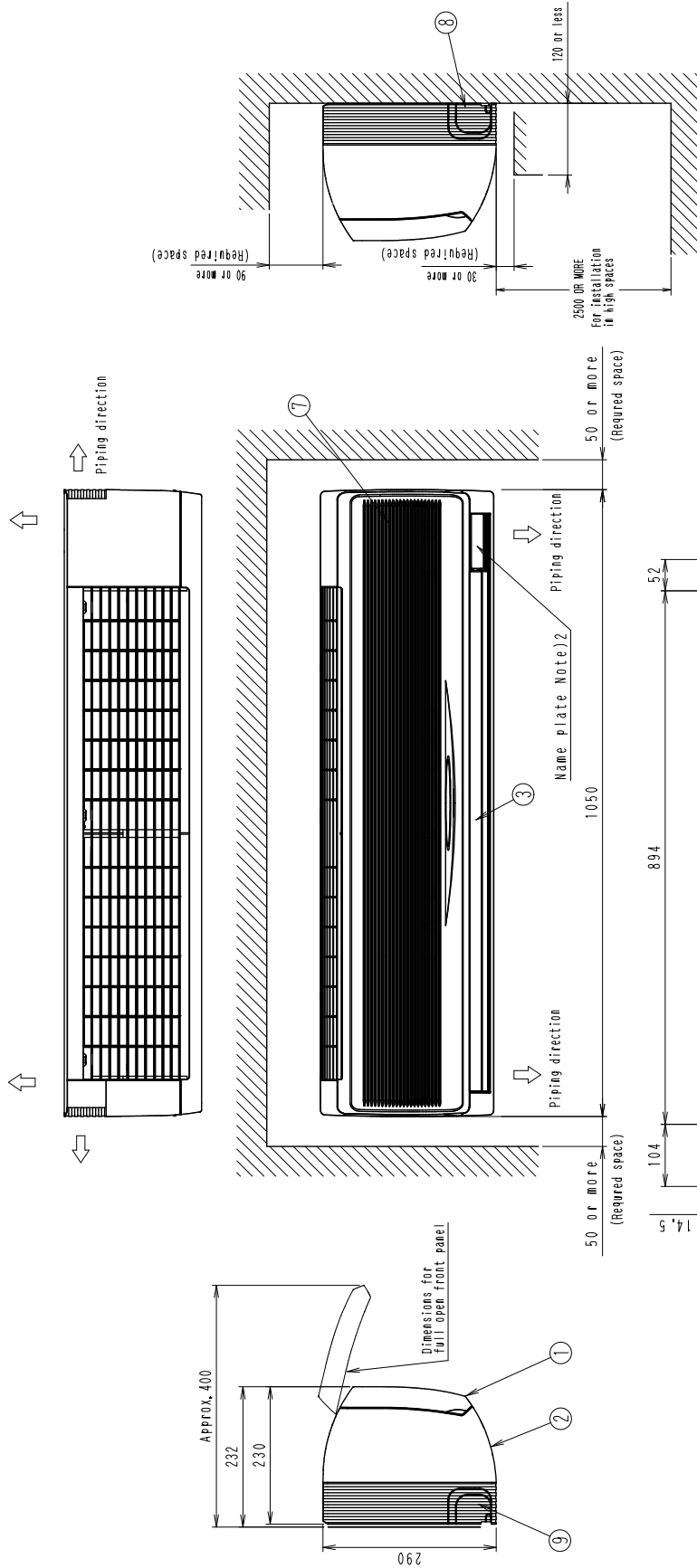
## Notes:

- ★1 Indoor temp. : 27°CDB, 19.5°CWB / outdoor temp; 35°CDB / Equivalent piping length: 7.5m, level difference: 0m.
- ★2 Indoor temp. : 27°CDB, 19.0°CWB / outdoor temp; 35°CDB / Equivalent piping length: 7.5m, level difference: 0m.
- ★3 Indoor temp. : 20°CDB / outdoor temp.: 7°CDB, 6°CWB / Equivalent piping length; 7.5m, level difference; 0m. (Heat pump only)
  - 4 Capacities are net, including a deduction for cooling (an addition for heating) for indoor fan motor heat.
- ★5 Anechoic chamber conversion value, measured under JISB8616 conditions. During actual operation, these values are normally somewhat higher as a result of ambient conditions.
- 6 Refer to page 300 for Fan Motor Input.

## Conversion Formulae

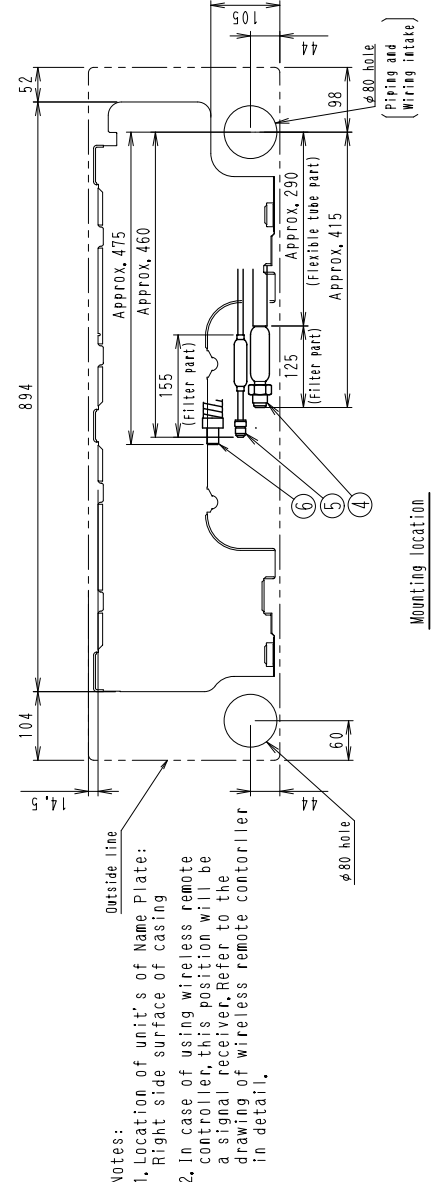
kcal/h=kW×860  
Btu/h=kW×3414  
cfm=m<sup>3</sup>/min×35.3

FXAQ40M  
FXAQ50M



Unit (mm)

No.	Name	Description
9	Left side pipe connection hole	
8	Right side pipe connection hole	
7	Grounding terminal	M4
6	Drain hose	WPI3 (External dia. $\phi$ 18)
5	Liquid pipe	$\phi$ 6.4 Flare connection
4	Gas pipe	$\phi$ 12, 7 Flare connection
3	Air outlet	
2	Front grill	
1	Front panel	



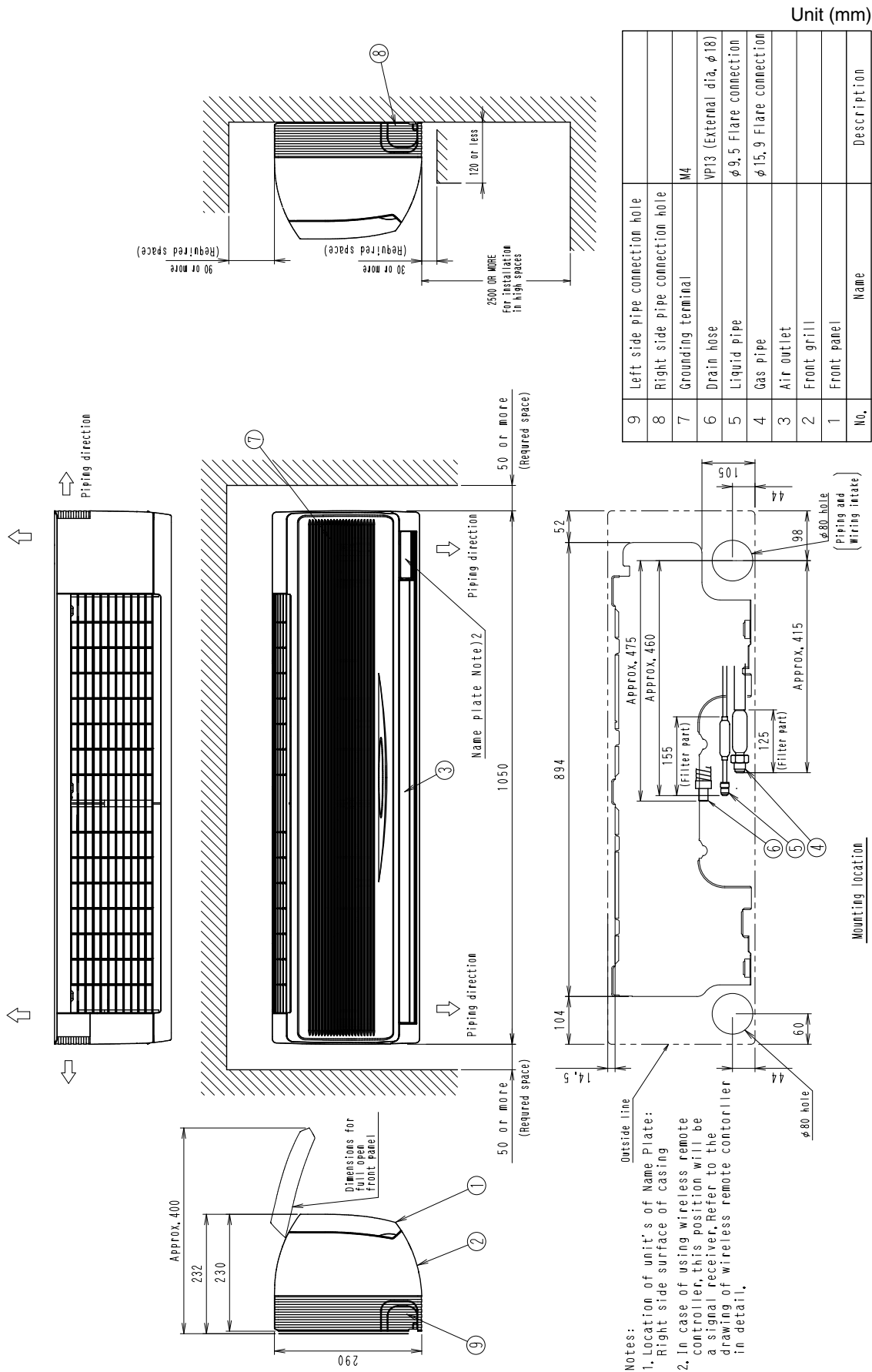
Notes:

1. Location of unit's of Name Plate:
2. In case of using wireless remote controller, this position will be a signal receiver. Refer to the drawing of wireless remote controller in detail.

Mounting location

3D038539A

FXAQ63M



Notes:  
 1. Location of unit's of Name Plate:  
 Right side surface of casing  
 2. In case of using wireless remote controller, this position will be a signal receiver, refer to the drawing of wireless remote controller in detail.