

## 2. Specifications

### Ceiling Mounted Cassette Type (Double Flow)

Model		FXCQ20MVE	FXCQ25MVE	FXCQ32MVE	FXCQ40MVE	
★1 Cooling Capacity (19.5°CWB)	kcal/h	2,000	2,500	3,150	4,000	
	Btu/h	7,900	9,900	12,500	15,900	
	kW	2.3	2.9	3.7	4.7	
★2 Cooling Capacity (19.0°CWB)	kW	2.2	2.8	3.6	4.5	
★3 Heating Capacity	kcal/h	2,200	2,800	3,400	4,300	
	Btu/h	8,500	10,900	13,600	17,000	
	kW	2.5	3.2	4.0	5.0	
Casing		Galvanized Steel Plate	Galvanized Steel Plate	Galvanized Steel Plate	Galvanized Steel Plate	
Dimensions: (H×W×D)		mm	305×775×600	305×775×600	305×990×600	
Coil (Cross Fin Coil)	Rows×Stages×Fin Pitch	mm	2×10×1.5	2×10×1.5	2×10×1.5	
	Face Area	m <sup>2</sup>	2×0.100	2×0.100	2×0.145	
Fan	Model		D17K2AA1	D17K2AB1	D17K2AB1	2D17K1AA1
	Type		Sirocco Fan	Sirocco Fan	Sirocco Fan	Sirocco Fan
	Motor Output × Number of Units	W	10×1	15×1	15×1	20×1
	Air Flow Rate (H/L)	m <sup>3</sup> /min	7/5	9/6.5	9/6.5	12/9
		cfm	247/177	318/230	318/230	424/318
Drive		Direct Drive	Direct Drive	Direct Drive	Direct Drive	
Temperature Control		Microprocessor Thermostat for Cooling and Heating	Microprocessor Thermostat for Cooling and Heating	Microprocessor Thermostat for Cooling and Heating	Microprocessor Thermostat for Cooling and Heating	
Sound Absorbing Thermal Insulation Material		Glass Wool/Urethane Foam	Glass Wool/Urethane Foam	Glass Wool/Urethane Foam	Glass Wool/Urethane Foam	
Piping Connections	Liquid Pipes	mm	φ6.4 (Flare Connection)	φ6.4 (Flare Connection)	φ6.4 (Flare Connection)	φ6.4 (Flare Connection)
	Gas Pipes	mm	φ12.7 (Flare Connection)	φ12.7 (Flare Connection)	φ12.7 (Flare Connection)	φ12.7 (Flare Connection)
	Drain Pipe	mm	VP25 ( External Dia. 32 Internal Dia. 25 )	VP25 ( External Dia. 32 Internal Dia. 25 )	VP25 ( External Dia. 32 Internal Dia. 25 )	VP25 ( External Dia. 32 Internal Dia. 25 )
Machine Weight		kg	26	26	26	31
★5 Sound Level (H/L) (220V)		dBA	32/27	34/28	34/28	34/29
Safety Devices		Fuse, Thermal Protector for Fan Motor	Fuse, Thermal Protector for Fan Motor	Fuse, Thermal Protector for Fan Motor	Fuse, Thermal Protector for Fan Motor	
Refrigerant Control		Electronic Expansion Valve	Electronic Expansion Valve	Electronic Expansion Valve	Electronic Expansion Valve	
Connectable outdoor unit		R410A M Series	R410A M Series	R410A M Series	R410A M Series	
Decoration Panels (Option)	Model		BYBC32G-W1	BYBC32G-W1	BYBC32G-W1	BYBC50G-W1
	Panel Color		White (10Y9/0.5)	White (10Y9/0.5)	White (10Y9/0.5)	White (10Y9/0.5)
	Dimensions: (H×W×D)	mm	53×1,030×680	53×1,030×680	53×1,030×680	53×1,245×680
	Air Filter		Resin Net (with Mold Resistant)	Resin Net (with Mold Resistant)	Resin Net (with Mold Resistant)	Resin Net (with Mold Resistant)
	Weight	kg	8	8	8	8.5
Standard Accessories		Operation Manual, Installation Manual, Paper Pattern for Installation, Washer for Hanging Brackets, Clamp Metal, Drain Hose, Insulation for Fitting, Washer Fixing Plates, Sealing Pads, Clamps, Screws, Washers.	Operation Manual, Installation Manual, Paper Pattern for Installation, Washer for Hanging Brackets, Clamp Metal, Drain Hose, Insulation for Fitting, Washer Fixing Plates, Sealing Pads, Clamps, Screws, Washers.	Operation Manual, Installation Manual, Paper Pattern for Installation, Washer for Hanging Brackets, Clamp Metal, Drain Hose, Insulation for Fitting, Washer Fixing Plates, Sealing Pads, Clamps, Screws, Washers.	Operation Manual, Installation Manual, Paper Pattern for Installation, Washer for Hanging Brackets, Clamp Metal, Drain Hose, Insulation for Fitting, Washer Fixing Plates, Sealing Pads, Clamps, Screws, Washers.	
Drawing No.		3D039413				

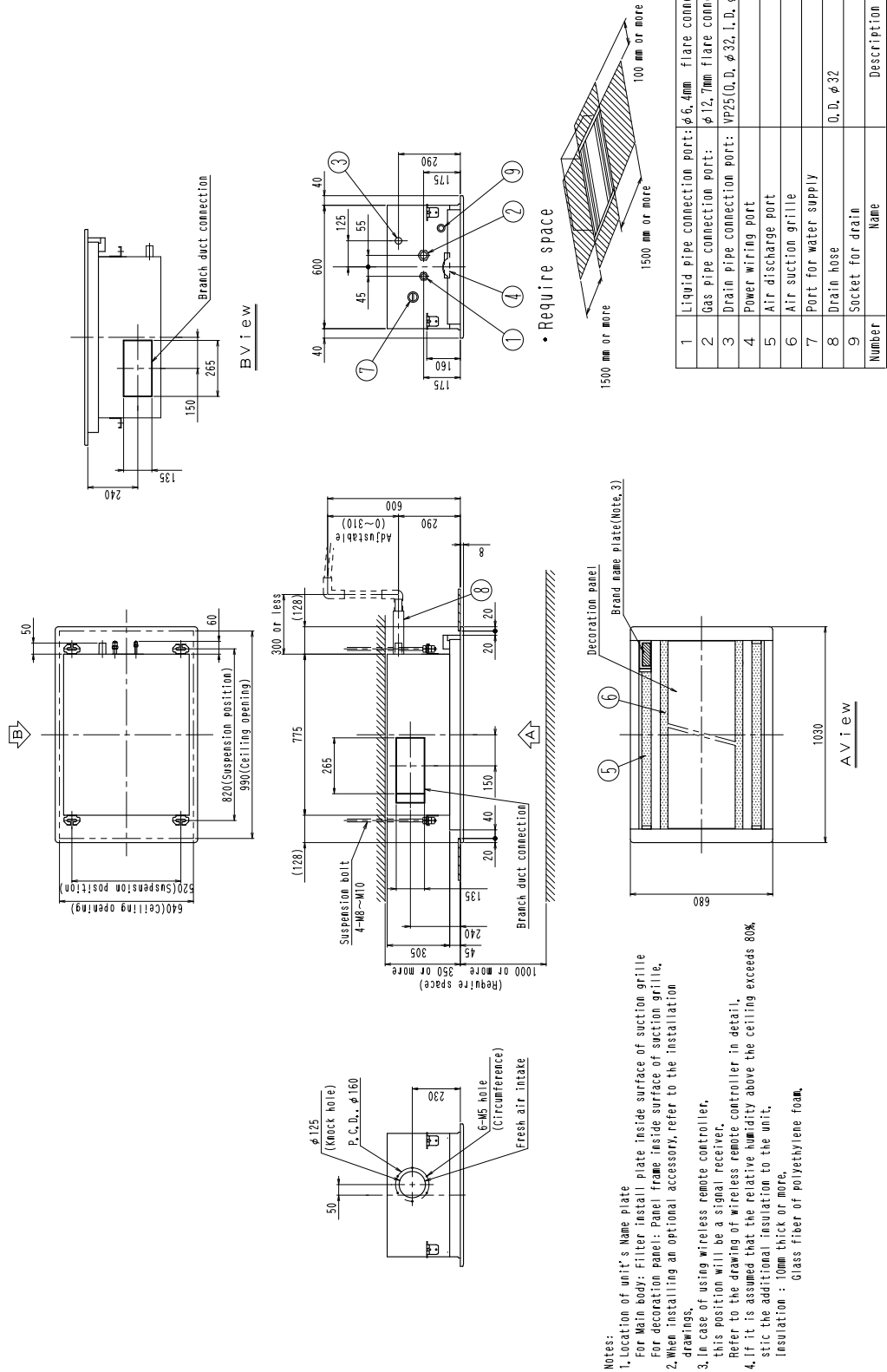
#### Notes:

- ★1 Indoor temp. : 27°CDB, 19.5°CWB / outdoor temp.: 35°CDB / Equivalent piping length: 7.5m, level difference: 0m.
- ★2 Indoor temp. : 27°CDB, 19.0°CWB / outdoor temp.: 35°CDB / Equivalent piping length: 7.5m, level difference: 0m.
- ★3 Indoor temp. : 20°CDB / outdoor temp.: 7°CDB, 6°CWB / Equivalent piping length: 7.5m, level difference: 0m. (Heat pump only)
- 4 Capacities are net, including a deduction for cooling (an addition for heating) for indoor fan motor heat.
- ★5 Anechoic chamber conversion value, measured under JISB8616 conditions. During actual operation, these values are normally somewhat higher as a result of ambient conditions.
- 6 Refer to page 71 for Fan Motor Input.

Conversion Formulae
kcal/h=kW×860
Btu/h=kW×3414
cfm=m <sup>3</sup> /min×35.3

### 3. Dimensions

- FXCQ20M + BYBC32G-W1 (Decoration Panel)
- FXCQ25M + BYBC32G-W1 (Decoration Panel)
- FXCQ32M + BYBC32G-W1 (Decoration Panel)



- Notes:
1. Location of unit's Name plate  
For Main body: Filter install plate inside surface of suction grille  
For decoration panel: Panel frame inside surface of suction grille.
  2. When installing an optional accessory, refer to the installation drawings.
  3. In case of using wireless remote controller, this position will be a signal receiver. Refer to the drawing of wireless remote controller in detail.
  4. If it is assumed that the relative humidity above the ceiling exceeds 80%, stic the additional insulation to the unit.  
Insulation : 10mm thick or more,  
Glass fiber of polyethylene foam.

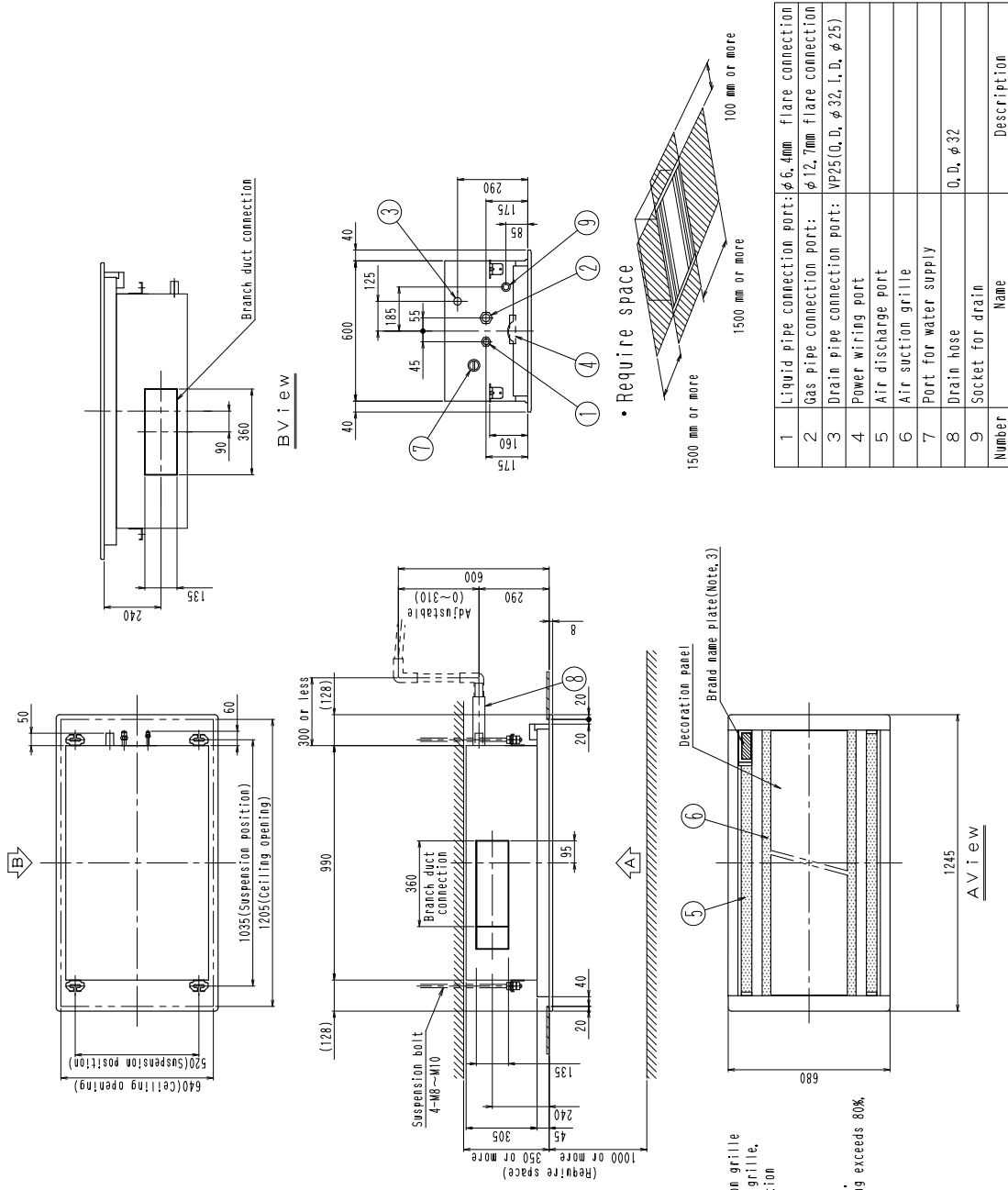
Unit (mm)

Number	Name	Description
1	Liquid pipe connection port: φ6.4mm	Flare connection
2	Gas pipe connection port: φ12.7mm	Flare connection
3	Drain pipe connection port: VP25(O, D, φ32, I, D, φ25)	
4	Power wiring port	
5	Air discharge port	
6	Air suction grille	
7	Port for water supply	
8	Drain hose	O, D, φ 32
9	Socket for drain	

3D039405A

FXCQ40M + BYBC50G-W1 (Decoration Panel)

Unit (mm)



- Notes:
1. Location of unit's Name plate  
For Main body: Filter install plate inside surface of suction grille  
For decoration panel: Panel frame inside surface of suction grille.
  2. When installing an optional accessory, refer to the installation drawings.
  3. In case of using wireless remote controller, this position will be a signal receiver.  
Refer to the drawing of wireless remote controller in detail.
  4. If it is assumed that the relative humidity above the ceiling exceeds 80%, stic the additional insulation to the unit.  
Insulation : 10mm thick or more.  
Glass fiber of polyethylene foam.

Number	Name	Description
1	Liquid pipe connection port: $\phi 6, 4\text{mm}$ flare connection	
2	Gas pipe connection port: $\phi 12, 7\text{mm}$ flare connection	
3	Drain pipe connection port: VP25(O.D. $\phi 32$ , I.D. $\phi 25$ )	
4	Power wiring port	
5	Air discharge port	
6	Air suction grille	
7	Port for water supply	
8	Drain hose	O.D. $\phi 32$
9	Socket for drain	

3D039406A