

2. Specifications

Ceiling Mounted Cassette Type (Multi-flow)

Model		FXFQ25MVE	FXFQ32MVE	FXFQ40MVE	FXFQ50MVE	
★1 Cooling Capacity (19.5°CWB)	kcal/h	2,500	3,150	4,000	5,000	
	Btu/h	9,900	12,500	15,900	19,900	
	kW	2.9	3.7	4.7	5.8	
★2 Cooling Capacity (19.0°CWB)	kW	2.8	3.6	4.5	5.6	
★3 Heating Capacity	kcal/h	2,800	3,400	4,300	5,400	
	Btu/h	10,900	13,600	17,000	21,500	
	kW	3.2	4.0	5.0	6.3	
Casing		Galvanized Steel Plate	Galvanized Steel Plate	Galvanized Steel Plate	Galvanized Steel Plate	
Dimensions: (H×W×D)		mm 246×840×840	246×840×840	246×840×840	246×840×840	
Coil (Cross Fin Coil)	Rows×Stages×Fin Pitch	mm 2×8×1.2	2×8×1.2	2×8×1.2	2×8×1.2	
	Face Area	m ² 0.363	0.363	0.363	0.363	
Fan	Model		QTS46D14M	QTS46D14M	QTS46D14M	QTS46D14M
	Type		Turbo Fan	Turbo Fan	Turbo Fan	Turbo Fan
	Motor Output × Number of Units	W	30×1	30×1	30×1	30×1
	Air Flow Rate (H/L)	m ³ /min	13/10	13/10	15/11	16/11
		cfm	459/353	459/353	530/388	565/388
Drive		Direct Drive	Direct Drive	Direct Drive	Direct Drive	
Temperature Control		Microprocessor Thermostat for Cooling and Heating	Microprocessor Thermostat for Cooling and Heating	Microprocessor Thermostat for Cooling and Heating	Microprocessor Thermostat for Cooling and Heating	
Sound Absorbing Thermal Insulation Material		Polyurethane Form	Polyurethane Form	Polyurethane Form	Polyurethane Form	
Piping Connections	Liquid Pipes	mm φ6.4 (Flare Connection)	φ6.4 (Flare Connection)	φ6.4 (Flare Connection)	φ6.4 (Flare Connection)	
	Gas Pipes	mm φ12.7 (Flare Connection)	φ12.7 (Flare Connection)	φ12.7 (Flare Connection)	φ12.7 (Flare Connection)	
	Drain Pipe	mm VP25 (External Dia. 32 Internal Dia. 25)	VP25 (External Dia. 32 Internal Dia. 25)	VP25 (External Dia. 32 Internal Dia. 25)	VP25 (External Dia. 32 Internal Dia. 25)	
Machine Weight	kg	24	24	24	24	
★5 Sound Level (H/L) (220V)	dBA	30/27	30/27	31/27	32/27	
Safety Devices		Fuse	Fuse	Fuse	Fuse	
Refrigerant Control		Electronic Expansion Valve	Electronic Expansion Valve	Electronic Expansion Valve	Electronic Expansion Valve	
Connectable outdoor unit		R410A M Series	R410A M Series	R410A M Series	R410A M Series	
Decoration Panels (Option)	Model		BYCP125D-W1	BYCP125D-W1	BYCP125D-W1	BYCP125D-W1
	Panel Color		White (10Y9/0.5)	White (10Y9/0.5)	White (10Y9/0.5)	White (10Y9/0.5)
	Dimensions: (H×W×D)	mm	45×950×950	45×950×950	45×950×950	45×950×950
	Air Filter		Resin Net (with Mold Resistant)	Resin Net (with Mold Resistant)	Resin Net (with Mold Resistant)	Resin Net (with Mold Resistant)
	Weight	kg	5.5	5.5	5.5	5.5
Standard Accessories		Operation manual, Installation manual, Paper pattern for installation, Drain hose, Clamp metal, Washer fixing plate, Sealing pads, Clamps, Screws, Washer for hanging bracket, Insulation for fitting.	Operation manual, Installation manual, Paper pattern for installation, Drain hose, Clamp metal, Washer fixing plate, Sealing pads, Clamps, Screws, Washer for hanging bracket, Insulation for fitting.	Operation manual, Installation manual, Paper pattern for installation, Drain hose, Clamp metal, Washer fixing plate, Sealing pads, Clamps, Screws, Washer for hanging bracket, Insulation for fitting.	Operation manual, Installation manual, Paper pattern for installation, Drain hose, Clamp metal, Washer fixing plate, Sealing pads, Clamps, Screws, Washer for hanging bracket, Insulation for fitting.	
Drawing No.		3D038812				

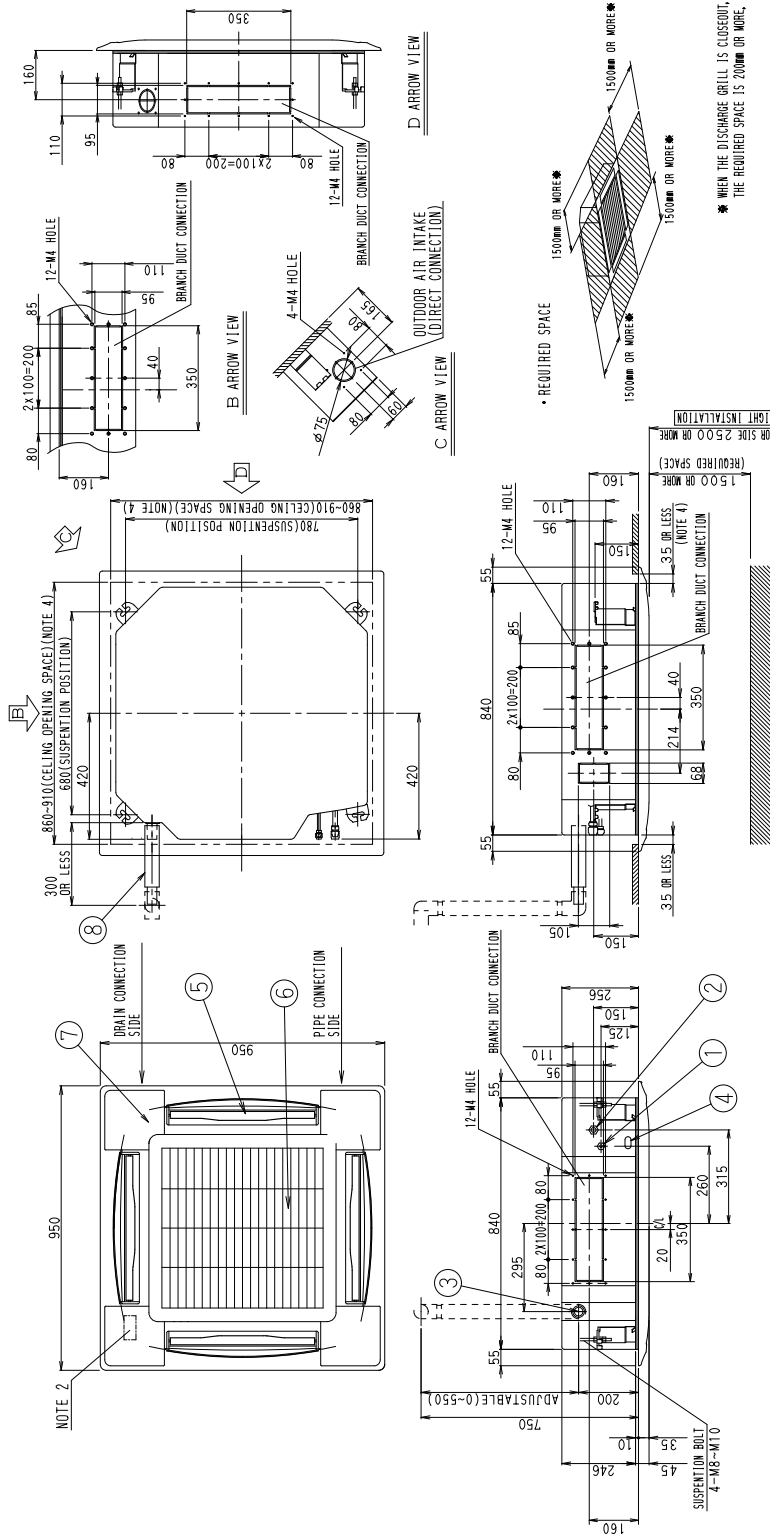
Notes:

- ★1 Indoor temp. : 27°CDB, 19.5°CWB / outdoor temp.: 35°CDB / Equivalent piping length: 7.5m, level difference: 0m.
- ★2 Indoor temp. : 27°CDB, 19.0°CWB / outdoor temp.: 35°CDB / Equivalent piping length: 7.5m, level difference: 0m.
- ★3 Indoor temp. : 20°CDB / outdoor temp.: 7°CDB, 6°CWB / Equivalent piping length; 7.5m, level difference; 0m. (Heat pump only)
- 4 Capacities are net, including a deduction for cooling (an addition for heating) for indoor fan motor heat.
- ★5 Anechoic chamber conversion value, measured under JIS8616 conditions. During actual operation, these values are normally somewhat higher as a result of ambient conditions.
- 6 Refer to page 126 for Fan Motor Input.

Conversion Formulae
kcal/h=kW×860
Btu/h=kW×3414
cfm=m ³ /min×35.3

3. Dimensions

- FXFQ25M + BYCP125D-W1(Decoration Panel)
- FXFQ32M + BYCP125D-W1(Decoration Panel)
- FXFQ40M + BYCP125D-W1(Decoration Panel)
- FXFQ50M + BYCP125D-W1(Decoration Panel)



NOTE) 1. STICKING LOCATION FOR MANUFACTURE'S LABEL FOR INDOOR UNIT: ON THE BELL MOUTH INSIDE SUCTION GRILLE
 MANUFACTURE'S LABEL FOR DECORATION PANEL: ON THE INNER FRAME INSIDE SUCTION GRILLE
 2. IN CASE OF USING WIRELESS REMOTE CONTROLLER, THIS POSITION WILL BE A SIGNAL RECEIVER.
 REFER TO THE DRAWING OF WIRELESS REMOTE CONTROLLER IN DETAIL.
 3. WHEN THE TEMPERATURE AND HUMIDITY IN THE CEILING EXCEED 30°C AND RH 80% OR THE FRESH AIR IS INDUCED INTO THE CEILING OR THE UNIT CONTINUES 24 HOUR OPERATION, AN ADDITIONAL INSULATION (THICKNESS 10mm OR MORE OF GLASSWOL OR POLYETHYLENE FORM) IS REQUIRED.
 4. THOUGH THE INSTALLATION IS ACCEPTABLE UP TO MAXIMUM OF 910mm SQUARE CEILING OPENING, KEEP THE CLEARANCE OF 35mm OR LESS BETWEEN THE MAIN UNIT AND THE CEILING OPENING SO THAT THE PANEL OVERLAP ALLOWANCE CAN BE ENSURED.

• DECORATION PANEL
 BYCP125D-W1 WHITE 10Y 9/0.5

ITEM	PART NAME	REMARK
8	DRAIN HOSE (ACCESSORY)	ID φ32 (OUTLET)
7	CORNER DECORATION COVER	
6	SUCTION GRILLE	
5	AIR-OUTLET	
4	POWER SUPPLY/WIRING/REMOTE CONTROLLER CONNECTION	VP25 (OD φ32)
3	DRAIN PIPE CONNECTION	φ12.7 (FLARE CONNECTION)
2	GAS PIPE CONNECTION	φ6.4 (FLARE CONNECTION)
1	LIQUID PIPE CONNECTION	

Unit (mm)

* WHEN THE DISCHARGE GRILL IS CLOSED, THE REQUIRED SPACE IS 200mm OR MORE.

• REQUIRED SPACE
 1500mm OR MORE*
 1500mm OR MORE*