

**Ceiling Mounted Cassette Type (Multi-flow)**

Model		FXFQ63MVE	FXFQ80MVE	FXFQ100MVE	FXFQ125MVE	
★1 Cooling Capacity (19.5°CWB)	kcal/h	6,300	8,000	10,000	12,500	
	Btu/h	25,000	31,800	39,700	49,600	
	kW	7.3	9.3	11.6	14.5	
★2 Cooling Capacity (19.0°CWB)	kW	7.1	9.0	11.2	14.0	
★3 Heating Capacity	kcal/h	6,900	8,600	10,800	13,800	
	Btu/h	27,300	34,100	42,700	54,600	
	kW	8.0	10.0	12.5	16.0	
Casing		Galvanized Steel Plate	Galvanized Steel Plate	Galvanized Steel Plate	Galvanized Steel Plate	
Dimensions: (H×W×D)		mm 246×840×840	246×840×840	288×840×840	288×840×840	
Coil (Cross Fin Coil)	Rows×Stages×Fin Pitch	mm 2×10×1.2	2×10×1.2	2×12×1.2	2×12×1.2	
	Face Area	m <sup>2</sup> 0.454	0.454	0.544	0.544	
Fan	Model		QTS46D14M	QTS46D14M	QTS46C17M	QTS46C17M
	Type		Turbo Fan	Turbo Fan	Turbo Fan	Turbo Fan
	Motor Output × Number of Units	W	30×1	30×1	120×1	120×1
	Air Flow Rate (H/L)	m <sup>3</sup> /min	18.5/14	20/15	26/21	30/24
		cfm	653/494	706/530	918/741	1,059/847
Drive		Direct Drive	Direct Drive	Direct Drive	Direct Drive	
Temperature Control		Microprocessor Thermostat for Cooling and Heating	Microprocessor Thermostat for Cooling and Heating	Microprocessor Thermostat for Cooling and Heating	Microprocessor Thermostat for Cooling and Heating	
Sound Absorbing Thermal Insulation Material		Polyurethane Form	Polyurethane Form	Polyurethane Form	Polyurethane Form	
Piping Connections	Liquid Pipes	mm φ9.5 (Flare Connection)	φ9.5 (Flare Connection)	φ9.5 (Flare Connection)	φ9.5 (Flare Connection)	
	Gas Pipes	mm φ15.9 (Flare Connection)	φ15.9 (Flare Connection)	φ15.9 (Flare Connection)	φ15.9 (Flare Connection)	
	Drain Pipe	mm VP25 ( External Dia. 32 Internal Dia. 25 )	VP25 ( External Dia. 32 Internal Dia. 25 )	VP25 ( External Dia. 32 Internal Dia. 25 )	VP25 ( External Dia. 32 Internal Dia. 25 )	
Machine Weight	kg	25	25	29	29	
★5 Sound Level (H/L)	dBA	33/28	36/31	39/33	42/36	
Safety Devices		Fuse	Fuse	Fuse	Fuse	
Refrigerant Control		Electronic Expansion Valve	Electronic Expansion Valve	Electronic Expansion Valve	Electronic Expansion Valve	
Connectable outdoor unit		R410A M Series	R410A M Series	R410A M Series	R410A M Series	
Decoration Panels (Option)	Model		BYCP125D-W1	BYCP125D-W1	BYCP125D-W1	BYCP125D-W1
	Panel Color		White (10Y9/0.5)	White (10Y9/0.5)	White (10Y9/0.5)	White (10Y9/0.5)
	Dimensions: (H×W×D)	mm	45×950×950	45×950×950	45×950×950	45×950×950
	Air Filter		Resin Net (with Mold Resistant)	Resin Net (with Mold Resistant)	Resin Net (with Mold Resistant)	Resin Net (with Mold Resistant)
	Weight	kg	5.5	5.5	5.5	5.5
Standard Accessories		Operation manual, Installation manual, Paper pattern for installation, Drain hose, Clamp metal, Washer fixing plate, Sealing pads, Clamps, Screws, Washer for hanging bracket, Insulation for fitting.	Operation manual, Installation manual, Paper pattern for installation, Drain hose, Clamp metal, Washer fixing plate, Sealing pads, Clamps, Screws, Washer for hanging bracket, Insulation for fitting.	Operation manual, Installation manual, Paper pattern for installation, Drain hose, Clamp metal, Washer fixing plate, Sealing pads, Clamps, Screws, Washer for hanging bracket, Insulation for fitting.	Operation manual, Installation manual, Paper pattern for installation, Drain hose, Clamp metal, Washer fixing plate, Sealing pads, Clamps, Screws, Washer for hanging bracket, Insulation for fitting.	
Drawing No.		3D038812				

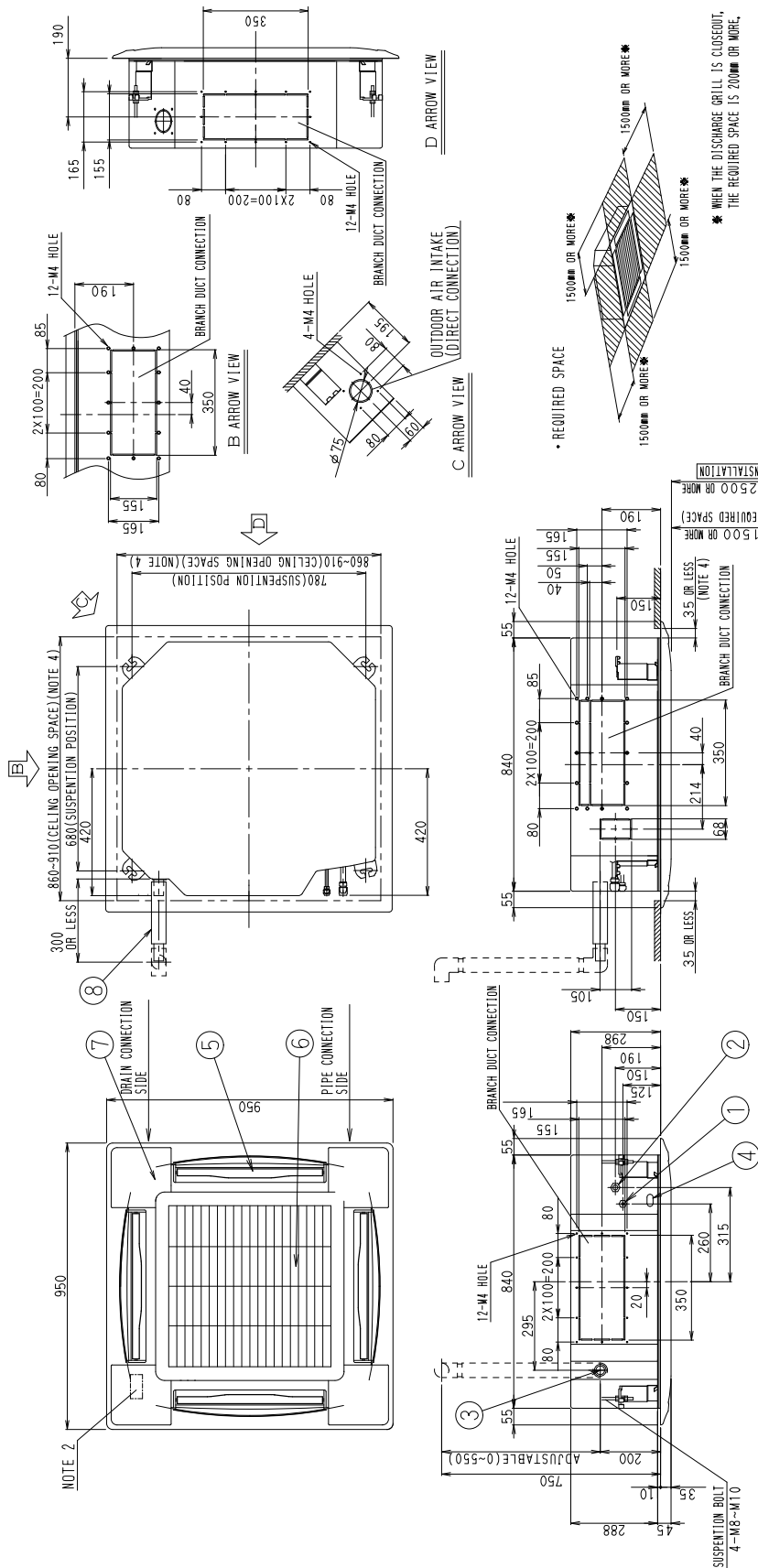
**Notes:**

- ★1 Indoor temp. : 27°CDB, 19.5°CWB / outdoor temp.: 35°CDB / Equivalent piping length: 7.5m, level difference: 0m.
- ★2 Indoor temp. : 27°CDB, 19.0°CWB / outdoor temp.: 35°CDB / Equivalent piping length: 7.5m, level difference: 0m.
- ★3 Indoor temp. : 20°CDB / outdoor temp.: 7°CDB, 6°CWB / Equivalent piping length; 7.5m, level difference; 0m. (Heat pump only)
- 4 Capacities are net, including a deduction for cooling (an addition for heating) for indoor fan motor heat.
- ★5 Anechoic chamber conversion value, measured under JISB8616 conditions. During actual operation, these values are normally somewhat higher as a result of ambient conditions.
- 6 Refer to page 126 for Fan Motor Input.

Conversion Formulae
kcal/h=kW×860
Btu/h=kW×3414
cfm=m <sup>3</sup> /min×35.3



**FXFQ100M + BYCP125D-W1 (Decoration Panel)**  
**FXFQ125M + BYCP125D-W1 (Decoration Panel)**



ITEM	PART NAME	REMARK
8	DRAIN HOSE (ACCESSORY)	OD φ32 (OUTLET)
7	CORNER DECORATION COVER	
6	SUCTION GRILLE	
5	AIR-OUTLET	
4	POWER SUPPLY/WIRING/ REMOTE CONTROLLER CONNECTION	VP.25 (OD φ32)
3	DRAIN PIPE CONNECTION	φ15.9 (FLARE CONNECTION)
2	GAS PIPE CONNECTION	φ9.5 (FLARE CONNECTION)
1	LIQUID PIPE CONNECTION	

Unit (mm)

3D038839