

**Floor Standing Type**

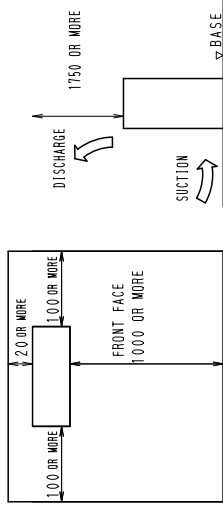
Model			FXLQ40MVE	FXLQ50MVE	FXLQ63MVE
★1 Cooling Capacity (19.5°CWB)		kcal/h	4,000	5,000	6,300
		Btu/h	15,900	19,900	25,000
		kW	4.7	5.8	7.3
★2 Cooling Capacity (19.0°CWB)		kW	4.5	5.6	7.1
★3 Heating Capacity		kcal/h	4,300	5,400	6,900
		Btu/h	17,000	21,500	27,300
		kW	5.0	6.3	8.0
Casing Color			Ivory White (5Y7.5/1)	Ivory White (5Y7.5/1)	Ivory White (5Y7.5/1)
Dimensions: (H×W×D)		mm	600×1,140×222	600×1,420×222	600×1,420×222
Coil (Cross Fin Coil)	Rows×Stages×Fin Pitch	mm	3×14×1.5	3×14×1.5	3×14×1.5
	Face Area	m <sup>2</sup>	0.200	0.282	0.282
Fan	Model		2D14B13	2D14B20	2D14B20
	Type		Sirocco Fan	Sirocco Fan	Sirocco Fan
	Motor Output × Number of Units	W	25×1	35×1	35×1
	Air Flow Rate (H/L)	m <sup>3</sup> /min	11/8.5	14/11	16/12
		cfm	388/300	494/388	565/424
Drive			Direct Drive	Direct Drive	Direct Drive
Temperature Control			Microprocessor Thermostat for Cooling and Heating	Microprocessor Thermostat for Cooling and Heating	Microprocessor Thermostat for Cooling and Heating
Sound Absorbing Thermal Insulation Material			Glass Fiber/ Urethane Foam	Glass Fiber/ Urethane Foam	Glass Fiber/ Urethane Foam
Air Filter			Resin Net (with Mold Resistant)	Resin Net (with Mold Resistant)	Resin Net (with Mold Resistant)
Piping Connections	Liquid Pipes	mm	φ6.4 (Flare Connection)	φ6.4 (Flare Connection)	φ9.5 (Flare Connection)
	Gas Pipes	mm	φ12.7 (Flare Connection)	φ12.7 (Flare Connection)	φ15.9 (Flare Connection)
	Drain Pipe	mm	φ21 O.D (Vinyl Chloride)	φ21 O.D (Vinyl Chloride)	φ21 O.D (Vinyl Chloride)
Machine Weight		kg	30	36	36
★5 Sound Level (H/L)		dBA	38/33	39/34	40/35
Safety Devices			Fuse, Thermal Protector for Fan Motor	Fuse, Thermal Protector for Fan Motor	Fuse, Thermal Protector for Fan Motor
Refrigerant Control			Electronic Expansion Valve	Electronic Expansion Valve	Electronic Expansion Valve
Connectable Outdoor Unit			R410A M Series	R410A M Series	R410A M Series
Standard Accessories			Operation Manual, Installation Manual, Insulation for Fitting, Drain Hose, Clamps, Screws, Washers, Level Adjustment Screw.	Operation Manual, Installation Manual, Insulation for Fitting, Drain Hose, Clamps, Screws, Washers, Level Adjustment Screw.	Operation Manual, Installation Manual, Insulation for Fitting, Drain Hose, Clamps, Screws, Washers, Level Adjustment Screw.
Drawing No.			3D038816		

**Notes:**

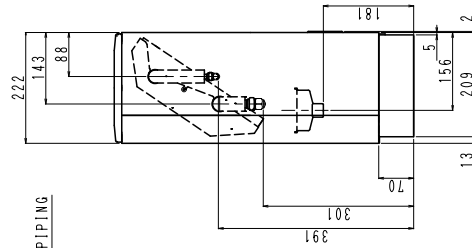
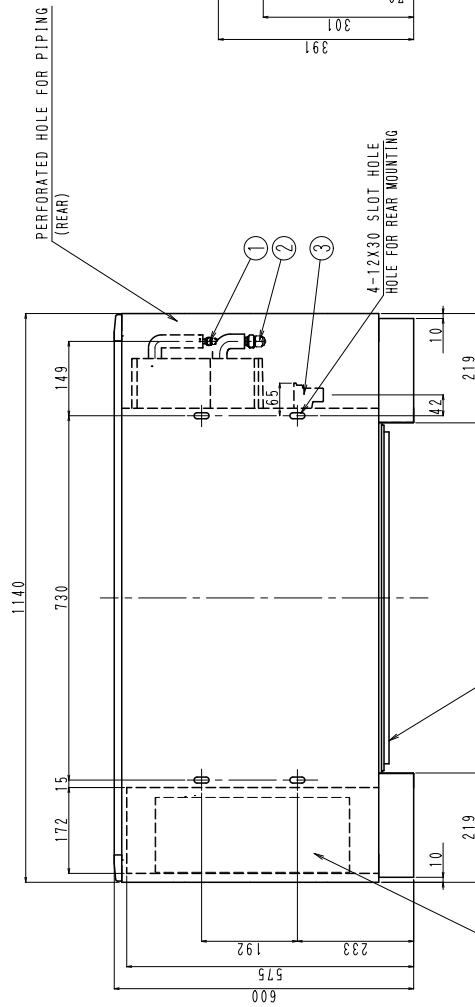
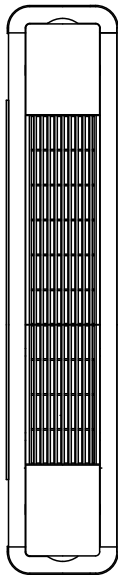
- ★1 Indoor temp. : 27°CDB, 19.5°CWB / outdoor temp.: 35°CDB / Equivalent piping length: 7.5m, level difference: 0m.
- ★2 Indoor temp. : 27°CDB, 19.0°CWB / outdoor temp.: 35°CDB / Equivalent piping length: 7.5m, level difference: 0m.
- ★3 Indoor temp. : 20°CDB / outdoor temp.: 7°CDB, 6°CWB / Equivalent piping length; 7.5m, level difference; 0m. (Heat pump only)
  - 4 Capacities are net, including a deduction for cooling (an addition for heating) for indoor fan motor heat.
- ★5 Anechoic chamber conversion value, measured at a point 1.5 m in front of the unit at a height of 1.5 m. During actual operation, these values are normally somewhat higher as a result of ambient conditions.
- 6 Refer to page 331 for Fan Motor Input.

Conversion Formulae
kcal/h=kW×860
Btu/h=kW×3414
cfm=m <sup>3</sup> /min×35.3

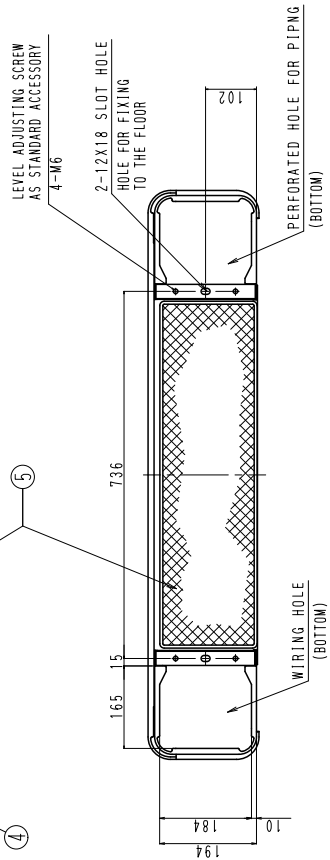
FXLQ40M



REQUIRED INSTALLATION SPACE



NOTE)  
1. LOCATION OF UNIT'S NAME PLATE:  
OUTSIDE SURFACE OF RIGHT SIDE PLATE.

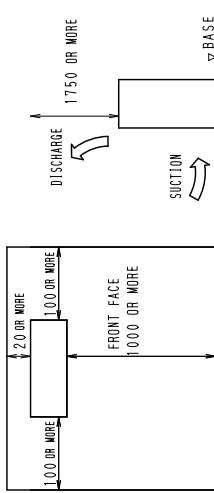


Unit (mm)

NUMBER	NAME	DESCRIPTION
1	LIQUID PIPE CONNECTION PORT	φ6, 4 FLARE CONNECTION
2	GAS PIPE CONNECTION PORT	φ12, 7 FLARE CONNECTION
3	DRAIN PIPE CONNECTION PORT	φ, D, 21
4	SWITCH BOX	
	AIR FILTER	

3D038861

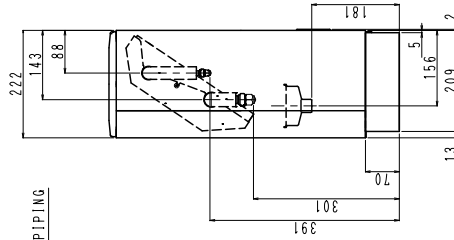
**FXLQ50M  
FXLQ63M**



REQUIRED INSTALLATION SPACE

Piping size (Field supply)

Indoor unit	Gas side	Liquid side
FXLQ50MVE	φ 12.7	φ 6.4
FXLQ63MVE	φ 15.9	φ 9.5



NOTE)  
1. LOCATION OF UNIT'S NAME PLATE:  
OUTSIDE SURFACE OF RIGHT SIDE PLATE.

NUMBER	NAME	DESCRIPTION
1	LIQUID PIPE CONNECTION	FLARE CONNECTION
2	GAS PIPE CONNECTION	FLARE CONNECTION
3	DRAIN PIPE CONNECTION PORT	O. D. 21
4	SWITCH BOX	
5	AIR FILTER	

3D038662

