

**Ceiling Mounted Duct Type**

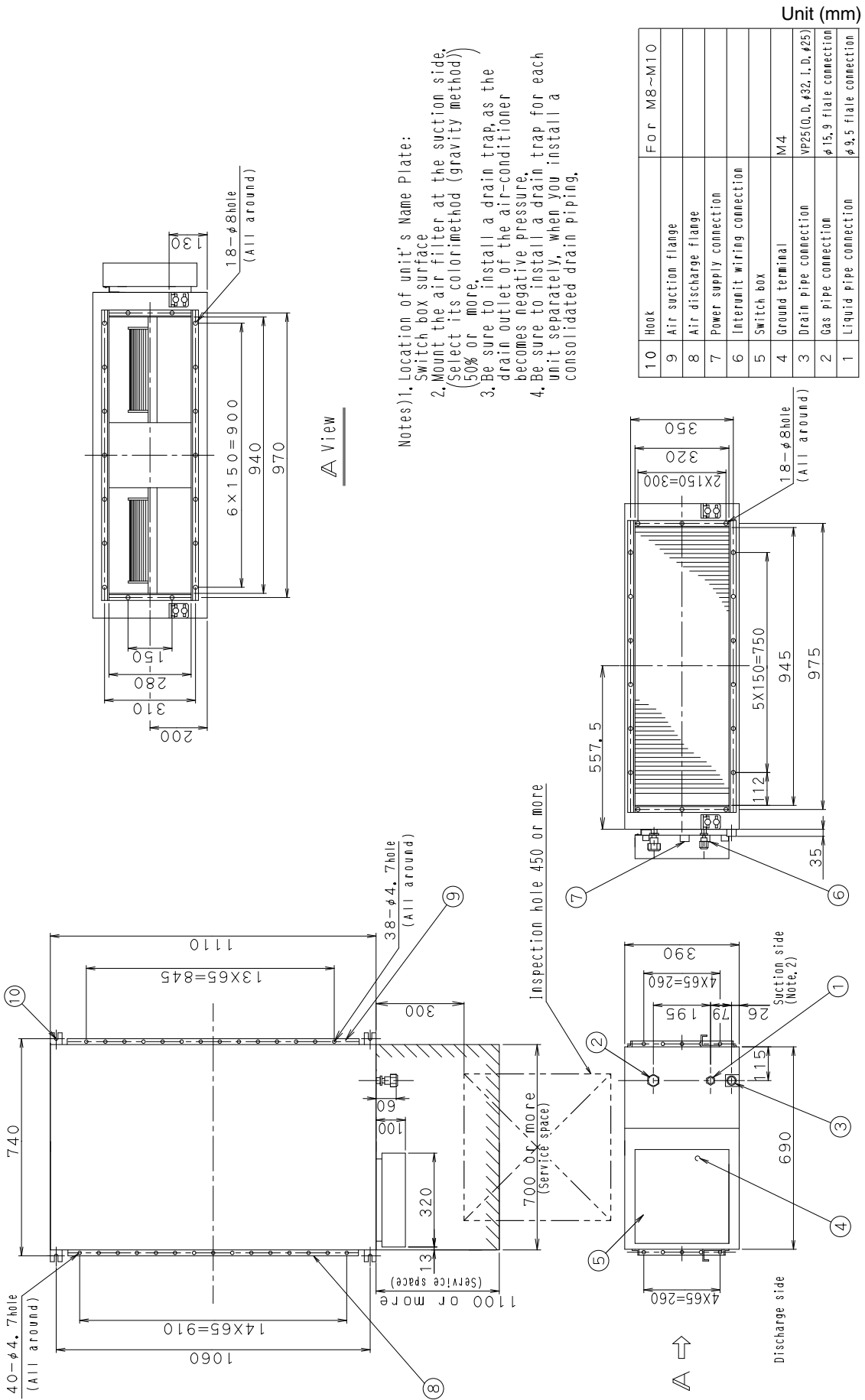
Model		FXMQ100MVE	FXMQ125MVE	FXMQ200MVE	FXMQ250MVE	
★1 Cooling Capacity (19.5°CWB)	kcal/h	10,000	12,500	20,000	25,000	
	Btu/h	39,700	49,600	79,000	99,000	
	kW	11.6	14.5	23.0	28.8	
★2 Cooling Capacity (19.0°CWB)	kW	11.2	14.0	22.4	28.0	
★3 Heating Capacity	kcal/h	10,800	13,800	21,500	27,000	
	Btu/h	42,700	54,600	85,300	107,500	
	kW	12.5	16.0	25.0	31.5	
Casing		Galvanized Steel Plate	Galvanized Steel Plate	Galvanized Steel Plate	Galvanized Steel Plate	
Dimensions: (H×W×D)		mm 390×1,110×690	390×1,110×690	470×1,380×1,100	470×1,380×1,100	
Coil (Cross Fin Coil)	Rows×Stages×Fin Pitch	mm 3×16×2.0	3×16×2.0	3×26×2.0	3×26×2.0	
	Face Area	m <sup>2</sup> 0.319	0.319	0.68	0.68	
Fan	Model		2D11/2D3AG1VE	2D11/2D3AF1VE	D13/4G2DA1×2	D13/4G2DA1×2
	Type		Sirocco Fan	Sirocco Fan	Sirocco Fan	Sirocco Fan
	Motor Output × Number of Units	W	270×1	430×1	380×2	380×2
	Air Flow Rate (H/L)	m <sup>3</sup> /min	29/23	36/29	58/50	72/62
		cfm	1,024/812	1,271/1,024	2,047/1,765	2,542/2,189
	External Static Pressure	Pa	157/172-98/98 ★4	191/245-152/172 ★4	221/270-132 ★4	270/191-147 ★4
Drive		Direct Drive	Direct Drive	Direct Drive	Direct Drive	
Temperature Control		Microprocessor Thermostat for Cooling and Heating	Microprocessor Thermostat for Cooling and Heating	Microprocessor Thermostat for Cooling and Heating	Microprocessor Thermostat for Cooling and Heating	
Sound Absorbing Thermal Insulation Material		Glass Fiber	Glass Fiber	Glass Fiber	Glass Fiber	
Air Filter		★5	★5	★5	★5	
Piping Connections	Liquid Pipes	mm φ9.5 (Flare Connection)	φ9.5 (Flare Connection)	φ9.5 (Flare Connection)	φ9.5 (Flare Connection)	
	Gas Pipes	mm φ15.9 (Flare Connection)	φ15.9 (Flare Connection)	φ19.1(Brazing Connection)	φ22.2 (Brazing Connection)	
	Drain Pipe	mm VP25 ( External Dia. 32 ) Internal Dia. 25 )	VP25 ( External Dia. 32 ) Internal Dia. 25 )	PS1B	PS1B	
Machine Weight	kg	63	65	137	137	
★8 Sound Level (H/L)	dBA	43/39	45/42	48/45	48/45	
Safety Devices		Fuse, Thermal Fuse for Fan Motor	Fuse, Thermal Fuse for Fan Motor	Fuse, Thermal Protector for Fan Motor	Fuse, Thermal Protector for Fan Motor	
Refrigerant Control		Electronic Expansion Valve	Electronic Expansion Valve	Electronic Expansion Valve	Electronic Expansion Valve	
Connectable outdoor unit		R410A M Series	R410A M Series	R410A M Series	R410A M Series	
Standard Accessories		Operation Manual, Installation Manual, Drain Hose, Clamp Metal, Insulation for Fitting, Sealing Pads, Clamps, Screws.	Operation Manual, Installation Manual, Drain Hose, Clamp Metal, Insulation for Fitting, Sealing Pads, Clamps, Screws.	Operation Manual, Installation Manual, Sealing Pads, Connection Pipes, Screws, Clamps.	Operation Manual, Installation Manual, Sealing Pads, Connection Pipes, Screws, Clamps.	
Drawing No.		3D038814				

**Notes:**

- ★1 Indoor temp. : 27°CDB, 19.5°CWB / outdoor temp.: 35°CDB / Equivalent piping length: 7.5m, level difference: 0m.
- ★2 Indoor temp. : 27°CDB, 19.0°CWB / outdoor temp.: 35°CDB / Equivalent piping length: 7.5m, level difference: 0m.
- ★3 Indoor temp. : 20°CDB / outdoor temp.: 7°CDB, 6°CWB / Equivalent piping length; 7.5m, level difference; 0m. (Heat pump only)
- ★4 Static external pressure is changeable to change over the connectors inside electrical box, this pressure means "High static pressure-Standard".
- ★5 Air filter is not standard accessory, but please mount it in the duct system of the suction side. Select its colorimetric method (gravity method) 50% or more.
- 6 Capacities are net, including a deduction for cooling (an addition for heating) for indoor fan motor heat.
- ★7 Anechoic chamber conversion value, measured at a point 1.5m downward from the unit center. These values are normally somewhat higher during actual operation as a result of ambient conditions.
- 8 Refer to page 252 for Fan Motor Input.

Conversion Formulae
kcal/h=kW×860
Btu/h=kW×3414
cfm=m <sup>3</sup> /min×35.3

FXMQ100M  
FXMQ125M



FXMQ200M  
FXMQ250M

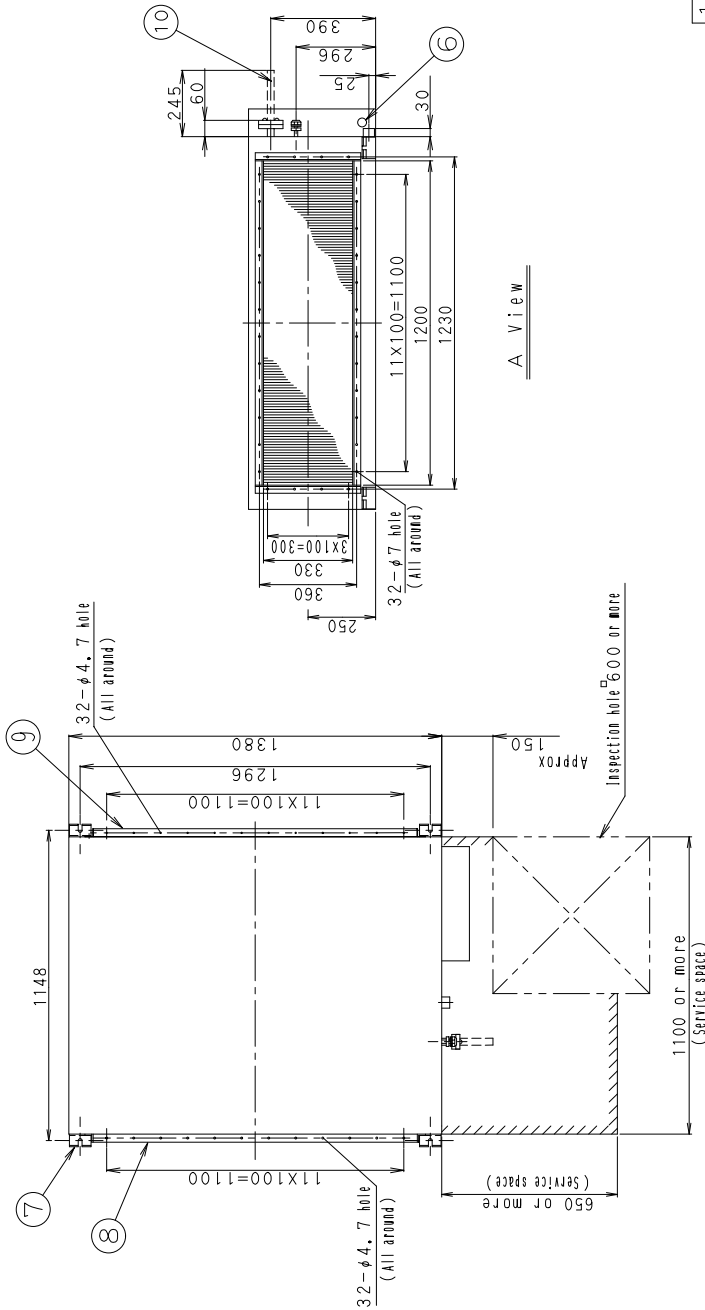
Unit (mm)

Piping size (Field supply)

Indoor unit	Gas side	Liquid side
FXMQ200MVE	φ19, 1 attached piping	φ9, 5
FXMQ250MVE	φ22, 2 attached piping	φ9, 5

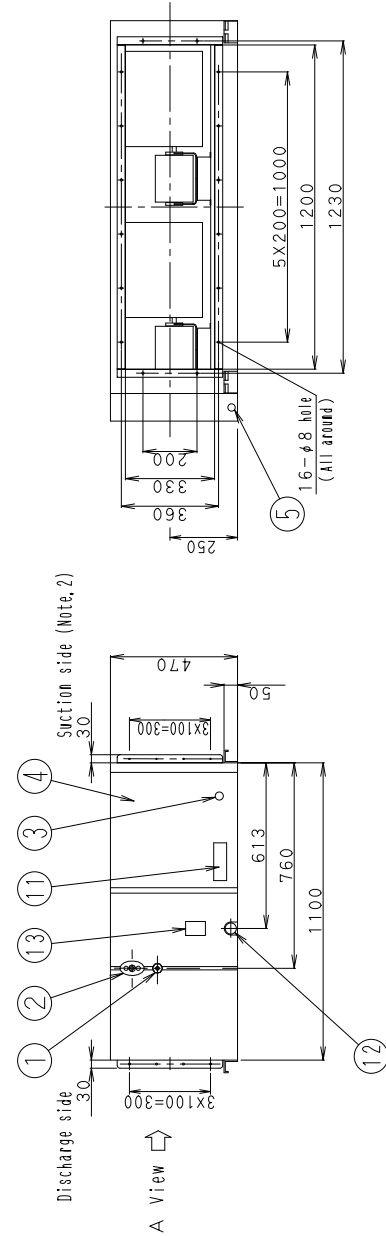
Notes ) 1. Location of unit's Name Plates:  
Switch box surface

2. Mount the air filter at the suction side.  
(Select its color/method (gravity method)  
(50% or more.)



A View

13	Water supply port	
12	Drain piping connection	PSIB Internal thread Major dia. φ33.349, Minor dia. φ30.391
11	Name plate	
10	Attached piping	Brazing
9	Suction flange	
8	Discharge companion flange	
7	Hook	M10
6	Transmission wiring connection	
5	Power supply wiring connection	
4	Switch box	
3	Ground terminal	M5 (Inside switch box)
2	Gas pipe connection	Attendant piping connection
1	Liquid pipe connection	Flare connection



A View