

2. Specifications

Ceiling Mounted Cassette Type (Multi Flow)600×600

Model			FXZQ20MVE	FXZQ25MVE	FXZQ32MVE
★1 Cooling Capacity (19.5°CWB)		kcal/h	2,000	2,500	3,150
		Btu/h	7,900	9,900	12,500
		kW	2.3	2.9	3.7
★2 Cooling Capacity (19.0°CWB)		kW	2.2	2.8	3.6
★3 Heating Capacity		kcal/h	2,200	2,800	3,400
		Btu/h	8,500	10,900	13,600
		kW	2.5	3.2	4.0
Casing			Galvanized Steel Plate	Galvanized Steel Plate	Galvanized Steel Plate
Dimensions: (H×W×D)		mm	260×575×575	260×575×575	260×575×575
Coil (Cross Fin Coil)	Rows×Stages×Fin Pitch	mm	2×10×1.5	2×10×1.5	2×10×1.5
	Face Area	m ²	0.269	0.269	0.269
Fan	Model		QTS32C15M	QTS32C15M	QTS32C15M
	Type		Turbo Fan	Turbo Fan	Turbo Fan
	Motor Output × Number of Units	W	55×1	55×1	55×1
	Air Flow Rate (H/L)	m ³ /min	9/7	9/7	9.5/7.5
		cfm	318/247	318/247	335/265
Drive			Direct Drive	Direct Drive	
Temperature Control			Microprocessor Thermostat for Cooling and Heating	Microprocessor Thermostat for Cooling and Heating	Microprocessor Thermostat for Cooling and Heating
Sound Absorbing Thermal Insulation Material			Foamed Polystyrene/ Foamed Polyethylene	Foamed Polystyrene/ Foamed Polyethylene	Foamed Polystyrene/ Foamed Polyethylene
Piping Connections	Liquid Pipes	mm	φ6.4 (Flare Connection)	φ6.4 (Flare Connection)	φ6.4 (Flare Connection)
	Gas Pipes	mm	φ12.7 (Flare Connection)	φ12.7 (Flare Connection)	φ12.7 (Flare Connection)
	Drain Pipe	mm	VP20 (External Dia. 26 Internal Dia. 20)	VP20 (External Dia. 26 Internal Dia. 20)	VP20 (External Dia. 26 Internal Dia. 20)
Machine Weight	kg	18	18	18	
★5 Sound Level (H/L) (230V)	dBA	30/25	30/25	32/26	
Safety Devices			Fuse	Fuse	Fuse
Refrigerant Control			Electronic Expansion Valve	Electronic Expansion Valve	Electronic Expansion Valve
Connectable outdoor unit			R410A M Series	R410A M Series	R410A M Series
Decoration Panels (Option)	Model		BYFQ60BW1	BYFQ60BW1	BYFQ60BW1
	Panel Color		White (Ral 9010)	White (Ral 9010)	White (Ral 9010)
	Dimensions: (H×W×D)	mm	55×700×700	55×700×700	55×700×700
	Air Filter		Resin Net (with Mold Resistant)	Resin Net (with Mold Resistant)	Resin Net (with Mold Resistant)
	Weight	kg	2.7	2.7	2.7
Standard Accessories			Operation Manual, Installation Manual, Paper Pattern for Installation, Drain Hose, Clamp Metal, Washer Fixing Plate, Sealing Pads, Clamps, Screws, Washer for Hanging Bracket, Insulation for Fitting.	Operation Manual, Installation Manual, Paper Pattern for Installation, Drain Hose, Clamp Metal, Washer Fixing Plate, Sealing Pads, Clamps, Screws, Washer for Hanging Bracket, Insulation for Fitting.	Operation Manual, Installation Manual, Paper Pattern for Installation, Drain Hose, Clamp Metal, Washer Fixing Plate, Sealing Pads, Clamps, Screws, Washer for Hanging Bracket, Insulation for Fitting.
Drawing No.			3D038929A		

Notes:

- ★1 Indoor temp. : 27°CDB, 19.5°CWB / outdoor temp.: 35°CDB / Equivalent piping length: 7.5m, level difference: 0m.
- ★2 Indoor temp. : 27°CDB, 19.0°CWB / outdoor temp.: 35°CDB / Equivalent piping length: 7.5m, level difference: 0m.
- ★3 Indoor temp. : 20°CDB / outdoor temp.: 7°CDB, 6°CWB / Equivalent piping length; 7.5m, level difference; 0m. (Heat pump only)
- 4 Capacities are net, including a deduction for cooling (an addition for heating) for indoor fan motor heat.
- ★5 Anechoic chamber conversion value, measured under JISB8616 conditions. During actual operation, these values are normally somewhat higher as a result of ambient conditions.
- 6 Refer to page 94 for Fan Motor Input.

Conversion Formulae

$$\begin{aligned} \text{kcal/h} &= \text{kW} \times 860 \\ \text{Btu/h} &= \text{kW} \times 3414 \\ \text{cfm} &= \text{m}^3/\text{min} \times 35.3 \end{aligned}$$

Ceiling Mounted Cassette Type (Multi Flow)600×600

Model			FXZQ40MVE	FXZQ50MVE
★1 Cooling Capacity (19.5°CWB)		kcal/h	4,000	5,000
		Btu/h	15,900	19,900
		kW	4.7	5.8
★2 Cooling Capacity (19.0°CWB)		kW	4.5	5.6
★3 Heating Capacity		kcal/h	4,300	5,400
		Btu/h	17,000	21,500
		kW	5.0	6.3
Casing			Galvanized Steel Plate	Galvanized Steel Plate
Dimensions: (H×W×D)		mm	260×575×575	260×575×575
Coil (Cross Fin Coil)	Rows×Stages×Fin Pitch	mm	2×10×1.5	2×10×1.5
	Face Area	m ²	0.269	0.269
Fan	Model		QTS32C15M	QTS32C15M
	Type		Turbo Fan	Turbo Fan
	Motor Output × Number of Units	W	55×1	55×1
	Air Flow Rate (H/L)	m ³ /min	11/8	14/10
		cfm	388/282	494/353
Drive			Direct Drive	Direct Drive
Temperature Control			Microprocessor Thermostat for Cooling and Heating	Microprocessor Thermostat for Cooling and Heating
Sound Absorbing Thermal Insulation Material			Foamed Polystyrene/Foamed Polyethylene	Foamed Polystyrene/Foamed Polyethylene
Piping Connections	Liquid Pipes	mm	φ6.4 (Flare Connection)	φ6.4 (Flare Connection)
	Gas Pipes	mm	φ12.7 (Flare Connection)	φ12.7 (Flare Connection)
	Drain Pipe	mm	VP20 (External Dia. 26 Internal Dia. 20)	VP20 (External Dia. 26 Internal Dia. 20)
Machine Weight		kg	18	18
★5 Sound Level (H/L) (230V)		dBA	36/28	41/33
Safety Devices			Fuse	Fuse,
Refrigerant Control			Electronic Expansion Valve	Electronic Expansion Valve
Connectable outdoor unit			R410A M Series	R410A M Series
Decoration Panels (Option)	Model		BYFQ60BW1	BYFQ60BW1
	Panel Color		White (Ral 9010)	White (Ral 9010)
	Dimensions: (H×W×D)	mm	55×700×700	55×700×700
	Air Filter		Resin Net (with Mold Resistant)	Resin Net (with Mold Resistant)
	Weight	kg	2.7	2.7
Standard Accessories			Operation Manual, Installation Manual, Paper Pattern for Installation, Drain Hose, Clamp Metal, Washer Fixing Plate, Sealing Pads, Clamps, Screws, Washer for Hanging Bracket, Insulation for Fitting.	Operation Manual, Installation Manual, Paper Pattern for Installation, Drain Hose, Clamp Metal, Washer Fixing Plate, Sealing Pads, Clamps, Screws, Washer for Hanging Bracket, Insulation for Fitting.
Drawing No.			3D038929A	

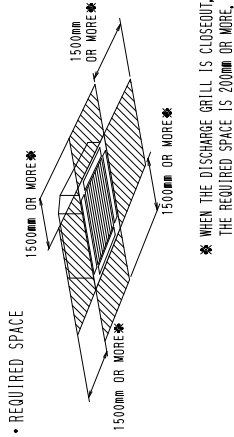
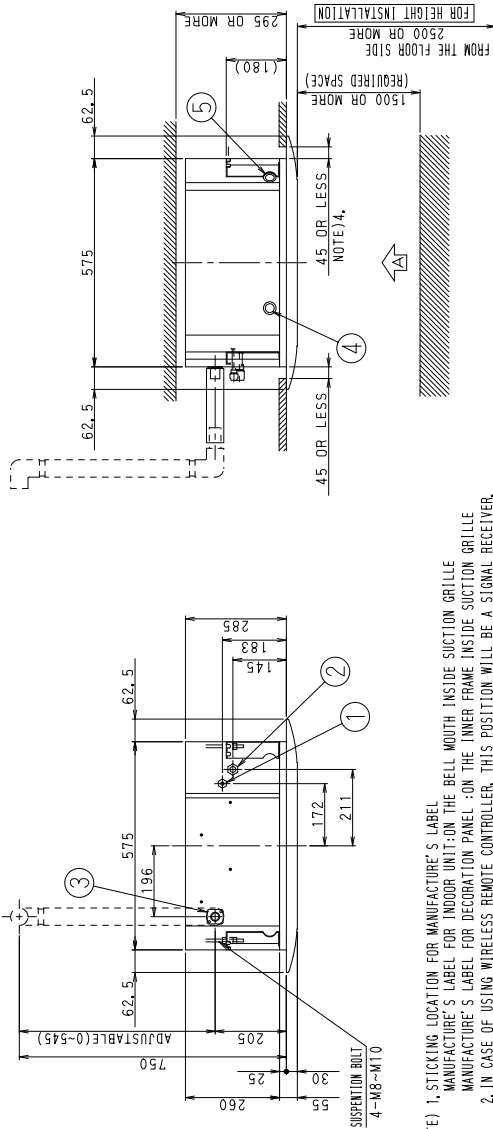
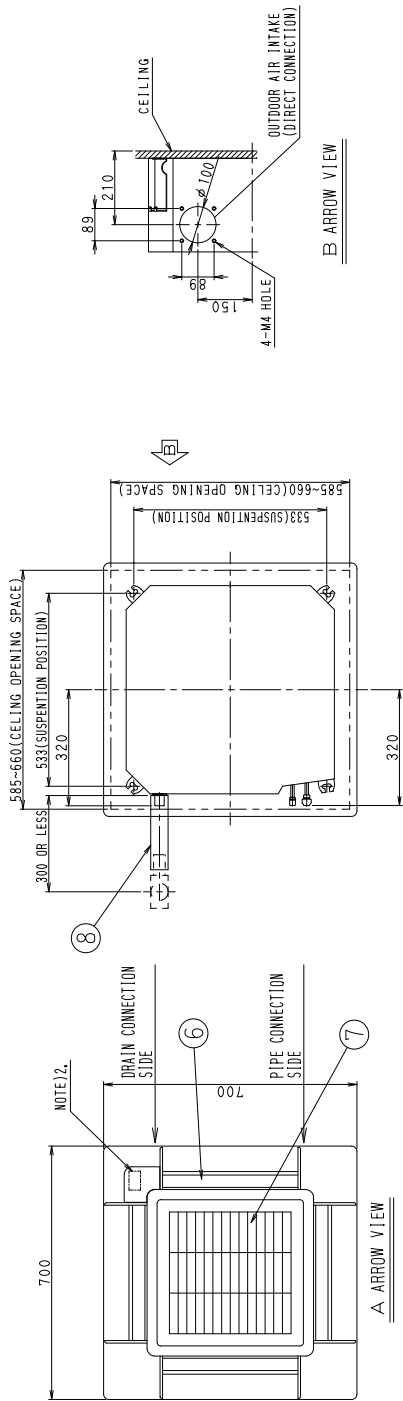
Notes:

- ★1 Indoor temp. : 27°CDB, 19.5°CWB / outdoor temp.: 35°CDB / Equivalent piping length: 7.5m, level difference: 0m.
- ★2 Indoor temp. : 27°CDB, 19.0°CWB / outdoor temp.: 35°CDB / Equivalent piping length: 7.5m, level difference: 0m.
- ★3 Indoor temp. : 20°CDB / outdoor temp.: 7°CDB, 6°CWB / Equivalent piping length; 7.5m, level difference; 0m. (Heat pump only)
- 4 Capacities are net, including a deduction for cooling (an addition for heating) for indoor fan motor heat.
- ★5 Anechoic chamber conversion value, measured under JISB8616 conditions. During actual operation, these values are normally somewhat higher as a result of ambient conditions.
- 6 Refer to page 94 for Fan Motor Input.

Conversion Formulae
kcal/h=kW×860
Btu/h=kW×3414
cfm=m ³ /min×35.3

3. Dimensions

FXZQ20MVE
 FXZQ25MVE
 FXZQ32MVE
 FXZQ40MVE
 FXZQ50MVE



NOTE) 1. STICKING LOCATION FOR MANUFACTURE'S LABEL
 MANUFACTURE'S LABEL FOR INDOOR UNIT-ON THE BELL MOUTH INSIDE SUCTION GRILLE
 MANUFACTURE'S LABEL FOR DECORATION PANEL-ON THE INNER FRAME INSIDE SUCTION GRILLE
 2. IN CASE OF USING WIRELESS REMOTE CONTROLLER, THIS POSITION WILL BE A SIGNAL RECEIVER.
 REFER TO THE DRAWING OF WIRELESS REMOTE CONTROLLER IN DETAIL.
 3. WHEN THE TEMPERATURE AND HUMIDITY IN THE CEILING EXCEED 30°C AND RH 80% OR THE FRESH AIR IS INDUCED INTO THE CEILING OR THE UNIT CONTINUES 24 HOUR OPERATION, AN ADDITIONAL INSULATION (THICKNESS 10mm OR MORE OF GLASSWOL OR POLYETHYLENE FORM) IS REQUIRED.
 4. THOUGH THE INSTALLATION IS ACCEPTABLE UP TO MAXIMUM OF 660mm SQUARE CEILING OPENING, KEEP THE CLEARANCE OF 45mm OR LESS BETWEEN THE MAIN UNIT AND THE CEILING OPENING SO THAT THE PANEL OVERLAP ALLOWANCE CAN BE ENSURED.

* DECORATION PANEL

BYF060BW1 WHITE Ra1 9010

ITEM	PART NAME	REMARK
8	DRAIN HOSE (ACCESSORY)	I. D. φ25 (OUTLET)
7	SUCTION GRILLE	
6	AIR DISCHARGE GRILLE	
5	REMOTE CONTROL CODE AND CONTROL WIRING CONNECTION	
4	POWER SUPPLY CONNECTION	
3	DRAIN PIPE CONNECTION	VP20(O.D.φ26)
2	GAS PIPE CONNECTION	φ12.7 (FLARE CONNECTION)
1	LIQUID PIPE CONNECTION	φ6.4 (FLARE CONNECTION)

Unit (mm)

3D039005B