

# 1. Specifications

Model Name			REYQ8MY1B	REYQ10MY1B
★1 Cooling Capacity (19.5°CWB)	kcal / h		20,000	25,000
	Btu / h		78,900	98,700
	kW		23.1	28.9
★2 Cooling Capacity (19.0°CWB)	kW		22.4	28.0
★3 Heating Capacity	kcal / h		21,500	27,000
	Btu / h		85,400	108,000
	kW		25.0	31.5
Casing Color			Ivory White (5Y7.5/1)	Ivory White (5Y7.5/1)
Dimensions: (H×W×D)		mm	1600×930×765	1600×930×765
Heat Exchanger			Cross Fin Coil	Cross Fin Coil
Comp.	Type		Hermetically Sealed Scroll Type	Hermetically Sealed Scroll Type
	Piston Displacement	m <sup>3</sup> /h	13.72+10.47	13.72+10.47
	Number of Revolutions	r.p.m	6480, 2900	6480, 2900
	Motor Output×Number of Units	kW	(1.2+4.5)×1	(2.7+4.5)×1
	Starting Method		Soft start	Soft start
Fan	Type		Propeller Fan	Propeller Fan
	Motor Output	kW	0.75×1	0.75×1
	Air Flow Rate	m <sup>3</sup> /min	175	180
	Drive		Direct Drive	Direct Drive
Connecting Pipes	Liquid Pipe	mm	φ9.5 (Flare Connection)	φ9.5 (Flare Connection)
	Suction Gas Pipe	mm	φ19.1 (Brazing Connection)	φ22.2 (Brazing Connection)
	Discharge Gas Pipe	mm	φ15.9 (Flare Connection)	φ19.1 (Brazing Connection)
	Oil Equalizing Pipe	mm	—	—
Machine Weight		kg	245	245
Safety Devices			High Pressure Switch, Fan Driver Overload Protector, Over Current Relay, Inverter Overload Protector, Fusible Plugs	High Pressure Switch, Fan Driver Overload Protector, Over Current Relay, Inverter Overload Protector, Fusible Plugs
Defrost Method			Deicer	Deicer
Capacity Control		%	14~100	14~100
Refrigerant	Refrigerant Name		R410A	R410A
	Charge	kg	13.5	15.8
	Control		Electronic Expansion Valve	Electronic Expansion Valve
Refrigerator Oil			Synthetic (ether) oil	Synthetic (ether) oil
	Charge Volume	L	1.9+1.6	1.9+1.6
Standard Accessories			Installation Manual, Operation Manual, Connection Pipes, Clamps	Installation Manual, Operation Manual, Connection Pipes, Clamps
Drawing No.			4D039031A	4D039032A

## Notes:

- ★1 Indoor temp. : 27°CDB, 19.5°CWB / outdoor temp. : 35°CDB / Equivalent piping length : 7.5m, level difference : 0m.
- ★2 Indoor temp. : 27°CDB, 19.0°CWB / outdoor temp. : 35°CDB / Equivalent piping length : 7.5m, level difference : 0m.
- ★3 Indoor temp. : 20°CDB / outdoor temp. : 7°CDB, 6°CWB / Equivalent piping length : 7.5m, level difference : 0m.
- 4 The power input (PI) (Comp. + Outdoor Fan Motor) : Refer to P.389-583.

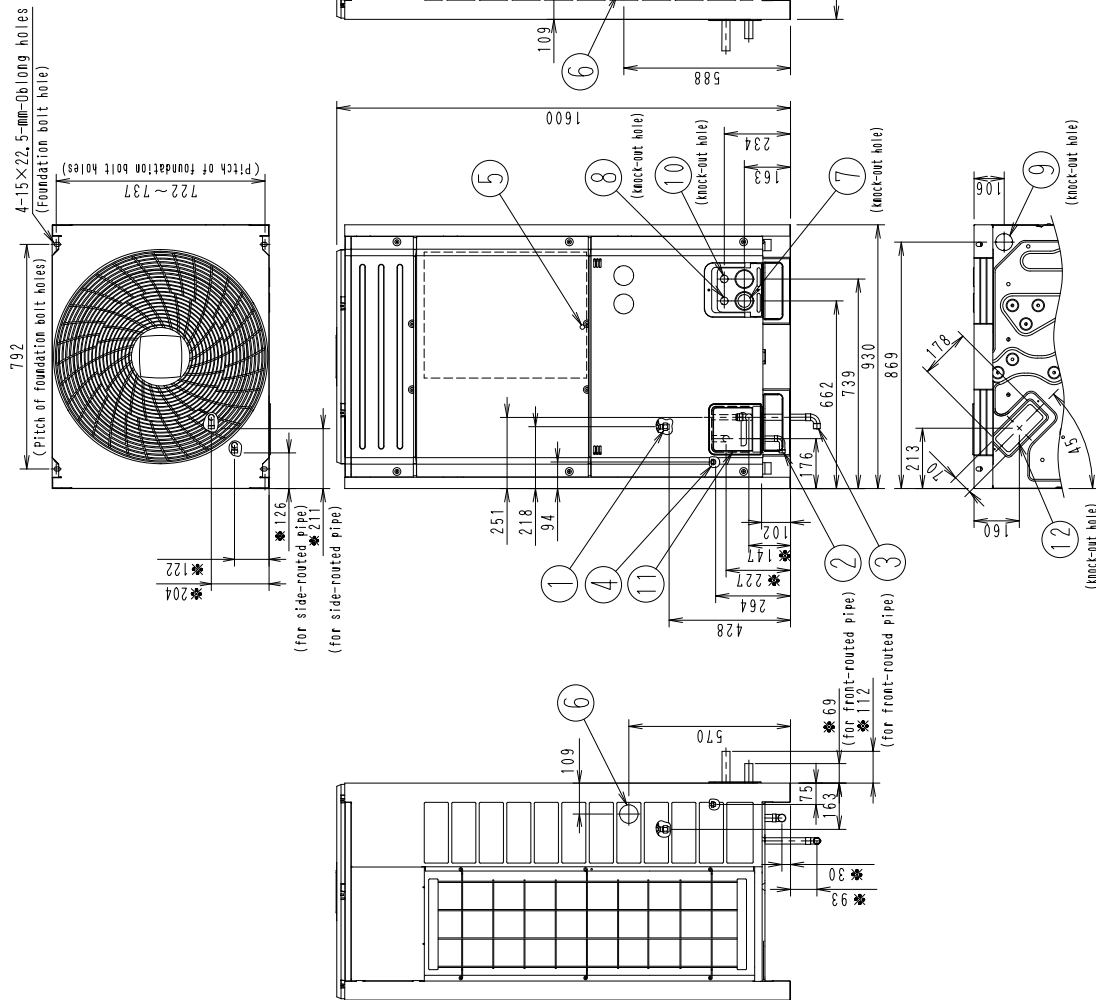
Conversion Formulae
kcal/h=kW×860
Btu/h=kW×3414
cfm=m <sup>3</sup> /min×35.3

## 2. Dimensions

Refer to page.370 for the Dimensions and Service Space of Combination Unit (18~48HP).

REYQ8M  
REYQ10M

- Notes)<sup>1</sup>, The dimensions marked by an asterisk(\*) are those with the installation of the provided pipes,  
2. Refer to the installation instructions when the pipes are routed through the bottom of the unit,  
3. In case of multi connection,  
4. Suction gas pipe  
5. Discharge gas pipe  
6. Brazing connection---REYQ8MY1B  
7. 22. 2 Brazing connection---REYQ10MY1B  
8. 15. 9 Brazing connection---REYQ8MY1B  
9. 19. 1 Brazing connection---REYQ10MY1B



1 2	Pipe routing hole(bottom)	(See note) 2.
1 1	Pipe routing hole(front)	
1 0	Wire routing hole(front)	φ 27
9	Power cord routing hole(bottom)	φ 50
8	Power cord routing hole(front)	φ 27
7	Power cord routing hole(side)	φ 45
6	Power cord routing hole(front)	φ 62
5	Grounding terminal	Inside of switch box(NB)
4	Oil pipe connection port	φ 6.1 Flare connection (See note) 3.
3	Discharge gas pipe connection port	(See note) 5.
2	Suction gas pipe connection port	(See note) 4.
1	Liquid pipe connection port	φ 9.5 Flare connection
No.	Parts name	Remarks

3D039585A